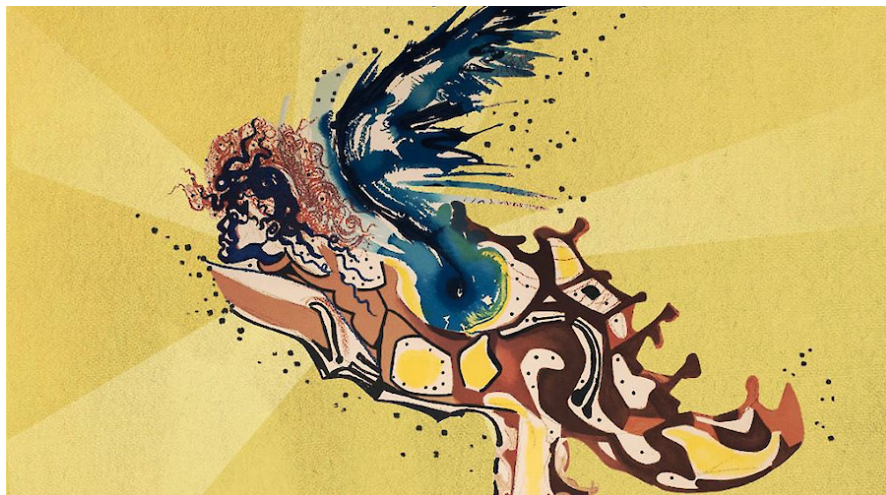




Dalí's Sacred Science – Religion and Mysticism



In these rarely displayed works from the Museum's vault, Dalí asserts the connection of science with the sacred, of word with image, male with female, the bodily with the divine.

This exhibition presents five mixed-media print suites, with additional mixed-media objects, that deal with science, religion, mythology, alchemy and mysticism.

Created during Dalí's later period when the artist turned his mind to the scientific and the spiritual, the suites build on ideas originally explored in Dalí's 1951 *Manifeste Mystique*. Accompanying the visual works, the exhibit will also feature written texts by Dalí and Sigmund Freud.

The exhibit includes 54 prints and several mixed-media objects from five projects:

1. *Mythology* (1960-64): 16 images drawn from the classical Greek pantheon
2. *Don Quixote* (1957): 12 experimental images inspired by Miguel de Cervantes' literary masterpiece
3. *Aliyah* (1968): 6 portraits, battles and sacred images on the founding of Israel
4. *Moses and Monotheism* (1975): 10 images in color, plus a sculptural portrait of Moses in silver, accompanying Sigmund Freud's text on religion
5. *The Alchemy of the Philosophers* (1979): 10 images on parchment made with ink and jewels and presented in a decorated box with symbols of mathematical perfection

The Museum has implemented a [variety of health and safety precautions](#) for

VISUAL ARTS
ST. PETERSBURG

Wed, July 01–
Sun, November 01, 2020

Venue

The Dalí Museum, One Dalí Blvd, St. Petersburg, FL 33701

[View map](#)

Phone: 727-823-3767

Admission

[Advance tickets](#) are required and include access to this exhibit

More information

[The Dalí Museum](#)

Credits

Presented by The Dalí Museum



its visitors, staff, members and volunteers.