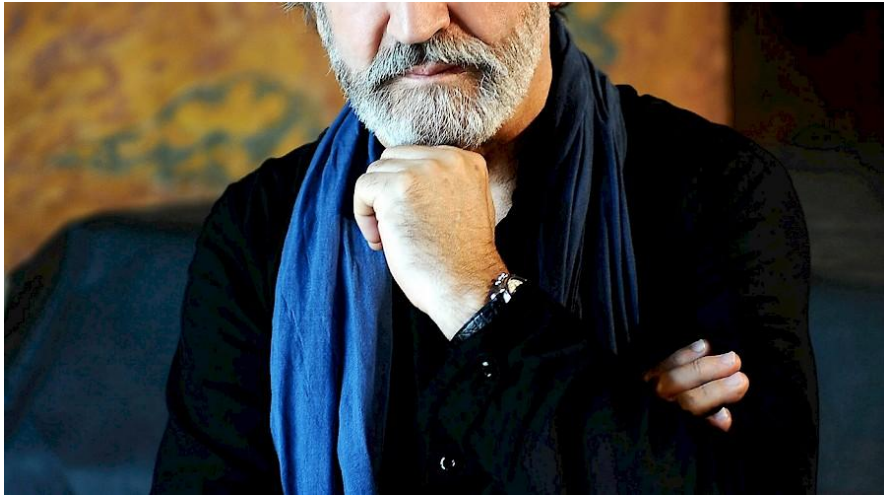




Folias Antiguas y Criollas: From the Ancient World to the New World



MUSIC
SEATTLE

Fri, February 28, 2014

Venue

Town Hall Seattle, 1119 8th Avenue,
Seattle, WA 98101

[View map](#)

Phone: 206-652-4255

More information

[Early Music Guild](#)

Credits

Organized by Early Music Guild
International Series. Image: Jordi Savall,
by David Ignaszewski.

Spanish ensemble Hesperion XXI, directed by its founder Jordi Savall, returns to Early Music Guild's International Series with harpist Andrew Lawrence King.

The term 'early-music superstar' is surely an oxymoron. But in the most understated of repertory, on the most subdued of instruments and in the most self-effacing way, Jordi Savall comes close to being one.

— *The New York Times*

Jordi Savall and his famous ensemble combine forces with the Mexican folklore ensemble Tembembe Ensemble Continuo to present *Folias Antiguas y Criollas: From the Ancient World to the New World*. Special guest harpist Andrew Lawrence King joins the ensemble of seven, with works by Diego Ortiz, Pedro Guerrero Moresca, Código Trujillo, and Colonial and folk music from all over South America.

One of the most multifariously gifted musicians of his generation, Jordi Savall's career as a concert performer, teacher, researcher and creator of new projects, both musical and cultural, make him one of the principal architects of the current reevaluation of historical music.

[Buy tickets](#) online.